

❄️ HAPPY ❄️
HOLIDAYS
and
*Happy New
Year*

December 2020



Your Update to the Five Points Transportation Study

Visit our Website

Project News

Upcoming Working Group Meeting Agenda: **Monday, January 25, 2021, 6:00 p.m.**

The next meeting of the Five Points Transportation Study Working Group will be held on **January 25, 2021 at 6:00 p.m.** The Project Team will provide an update on the status of the Five Points Transportation Study Implementation Plan. Other discussion topics may include*:

- Welcome and introduction of new Working Group members
- Henlopen Transportation Improvement District (TID) overview
- New initiatives to be undertaken in 2021

The video presentation and meeting packet from the October 26, 2020 Working Group meeting can be found [here](#).

We hope you have a safe and happy holiday season!

*Disclaimer: Discussion topics are subject to change until final publication on the DelDOT Public Meeting Calendar

Upcoming Working Group Meetings: **Mark Your New 2021 Calendar!**

Working Group meetings have been scheduled for the following dates:

- **Monday, January 25, 2021, 6:00 p.m.**



The January 25 meeting will be held online and the April 26 meeting location remains to be determined, as is whether the meeting will be held in-person or online. We will provide more information as it becomes available.

Area Project Updates



Active DeIDOT Projects In and Around Five Points

At the Working Group's request, DeIDOT has provided a map of active projects in and around the Five Points area. Use the map to view any active project and/or visit the links below to view the websites for a selection of projects.

[View the Interactive Map Here.](#)

- [Bridges 3-155 \(northbound and southbound\) on SR 1 over the Broadkill River](#)
- [Bridge 3-714 on S266 \(New Road\) over Canary Creek](#)
- [Removal of Bridge 3-928R, Lewes RR Swing Bridge over the Lewes and Rehoboth Canal](#)
- [US 9 and SR 5 Intersection](#)
- [Plantation Road Improvements, Robinsonville Road to US 9](#)
- [Plantation Road Improvements, SR 24 to US 9 - Phase 2](#)
- [Realignment of Old Orchard Road at Wescoats Corner](#)
- [SR 1 & SR 5 Intersection Improvements](#)
- [SR 1 & SR 16 Grade Separated Intersection](#)
- [SR 1 & S258 Intersection Improvements](#)
- [SR 1 & S264 Intersection Improvements](#)
- [SR 1 and Cave Neck Road Grade Separated Intersection](#)
- [SR 1, Minos Conaway Road Grade Separated Intersection](#)
- [SR 24, Mulberry Knoll to SR 1](#)
- [SR 24, Love Creek to Mulberry Knoll Road](#)

Knowledge Center

Winter Driving 101

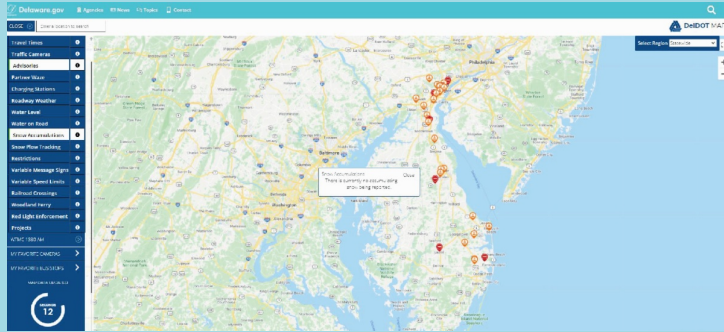
Whether we like it or not, December 21 marks the official start of winter. In addition to shorter days and colder temperatures, winter weather brings many driving challenges. DeIDOT has developed several tools and resources to help you navigate difficult winter weather conditions, ensuring you get to and from your destination safely.

DeIDOT's online [Inclement Weather Travel Center](#) provides real-time weather-related information, road closures, travel advisories, and weather advisories for all three Delaware counties. The website also includes real-time DART service advisories as well as DeIDOT news alerts and storm updates from the Delaware Emergency Management Agency.

Driving in winter weather is dangerous and can lead to serious injuries or even fatalities. DeIDOT partnered with the Delaware American Automobile Association (AAA) to prepare [Winter Driving Guidelines](#) to improve safety for motorists and others. To stay safe in

hazardous road conditions this coming winter, DeIDOT and AAA recommend all road users:

- Winterize your car
- Have an emergency road kit for winter weather
- Use winter driving skills when confronting storm conditions
- Be careful around snowplows to avoid injury and damage to your car
- Follow Delaware's three-level driving warnings and restrictions



DeIDOT's real-time, [interactive map](#), available online and on the [DeIDOT mobile app](#), is a great resource for all winter weather information throughout the state. Click on the map layers to display useful information like roadway weather conditions, advisories, and snow accumulation. A key feature of the map is the "Snowplow Tracker". Through the use of GPS, citizens can follow DeIDOT's fleet of 330 snowplows, in real-time, as they work to keep your roadways across the state as safe as possible.

DeIDOT encourages all residents to visit the Incident Weather Travel Center and use the features of the Interactive map/mobile app to determine if they are comfortable driving in the winter weather and make preparations if they absolutely must travel.

Follow DeIDOT on Facebook and Twitter, @DelawareDOT. Use #SnowDE or #StormDE for updates on snow and roadway conditions. Please be safe Delaware!

You are receiving this because you subscribed to receive updates/emails via the State of Delaware Notification System